

DS-2XM6825G1/C-IV(S)(M)(/ND) Mobile People Counting Network Camera



- High quality imaging with 2 MP resolution
- Efficient H.265+ compression technology
- Clear imaging against strong back light due to 105 dB WDR technology
- Water and dust resistant (IP66) and vandal resistant(IK08)

▪ Specification

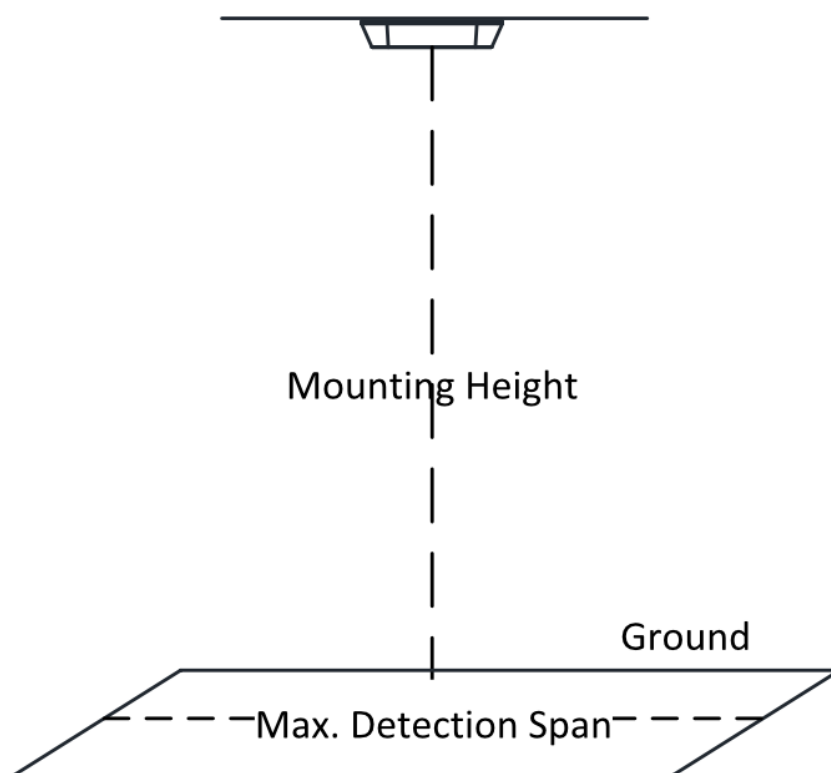
Camera	
Image Sensor	1/2.8" Progressive Scan CMOS
Min. Illumination	Color: 0.002 Lux @ (F1.2, AGC ON), 0.007 Lux @ (F2.25, AGC ON) B/W: 0.0002 Lux @ (F1.2, AGC ON), 0.0007 Lux @ (F2.25, AGC ON)
Shutter Speed	1/3 s to 1/100,000 s
Resolution	1920 × 1080
Day & Night	IR cut filter
Angle Adjustment	Pan: 0° Tilt: 0° to 25° Zoom: 0°
Lens	
FOV	Horizontal FOV:108°, Vertical FOV: 74°, Diagonal FOV:115°
Focal Length	2mm
Lens Mount	M12
Max. Aperture	F2.25
Illuminator	
IR Wavelength	850 nm
IR Range	Up to 3 m IR range
Video	
H.264+	Main stream, Sub-stream, Third stream
H.265+	Main stream, Sub-stream, Third stream
Main Stream	50Hz: 25fps (1920 × 1080, 1440 × 900); 60Hz: 30fps (1920 × 1080, 1440 × 900)
Sub-Stream	50Hz: 25fps (704 × 576, 640 × 480) 60Hz: 30fps (704 × 576, 640 × 480)
Third Stream	50Hz: 25fps (1920 × 1080) 60Hz: 30fps (1920 × 1080)
Video Compression	Main stream: H.265+/H.265/H.264+/H.264 Sub stream: H.265+/H.265/H.264/ H.264+/MJPEG Third stream: H.265+/H.265/H.264+/H.264
Video Bit Rate	Main stream: 512Kbps to 16Mbps Sub stream: 256Kbps to 4Mbps Third stream: 256Kbps to 4Mbps
H.264 Type	Baseline Profile/Main Profile/High Profile
H.265 Type	Main Profile
Region Of Interest (ROI)	Support 2 fixed region for (main/sub) stream
Network	
Protocols	TCP/IP, ICMP, HTTP, HTTPS, FTP, DHCP, DNS, DDNS, RTP, RTSP, RTCP, NTP, UPnP, SMTP, SNMP, IGMP, 802.1X, QoS, IPv6, UDP, SSL/TLS
Simultaneous Live View	Up to 16 channels(Main Stream and Sub Stream each 8 channels)
API	ONVIF (PROFILE S, PROFILE G), ISAPI, SDK
User Management	Up to 16 users of 3 levels of user authority: administrator, operator and common user
Web Browser	IE8+, Chrome41+, Edge16+, Firefox30+

Image	
Picture Overlay	Support overlay of a 24 bit BMP picture of 128×128; support the picture uploading, enable the overlay, and set the coordinate of the picture.
DNR	Support
Image Settings	Brightness, contrast, saturation, white balance, AGC and sharpness can be adjusted via browser and client
Day/Night Switch	Day, Night, Auto, Scheduled, Triggered by alarm
Image Enhancement	HLC, BLC, 2D DNR, 3D DNR, defog
Interface	
Local Storage	Built-in Micro SD/Micro SDHC/Micro SDXC Slot, up to 256 GB(not for baseline. Note the Micro-SD card capacity when ordering)
Alarm	2 channels of alarm input, 2 channels of alarm output
RS-485	1 channels of RS-485
Interface Type	Built-in
Deep Learning Function	
People Counting	Support counting people entering and exiting separately; Support real-time and scheduled uploading of the statistics; Support filtering target by height.
Event	
Basic Event	Video tampering, exception (disk full, disk error, illegal login)
Linkage Method	Upload to FTP, notify monitoring center, send email, alarm output
General	
Product Dimension	230 mm × 100 mm × 50 mm (9.1" × 3.9" × 2.0")
Package Dimension	280 mm × 135 mm × 135 mm(11" × 5.3" × 5.3")
Product Weight	Approx. 640 g (Approx. 1.4 lb.)
With Package Weight	Approx. 960 g (Approx. 2.1 lb.)
Power	PoE: 0.30 A to 0.20 A, max: 10W DC: 0.83-0.21A, max 7.5W
Power Supply	IMS: DC 9 V to 36 V, PoE (802.3af, , 36 V to 57 V) IS: DC 9 V to 36 V, PoE (802.3af, , 36 V to 57 V)
Power Interface	IMS: Molex, M12-4F/S, 2 alarm channels, 485 IS: RJ45-F, DC-J, 2 alarm channels, 485
Camera Material	Metal
Startup and Operating Conditions	-30°C to 75° C (-22°F to 167°F). Humidity 95% or less (non-condensing)
General Function	Reset, anti-flicker, heart beat, water mark, password protection, IP address filter
Language	English, French, German, Russian, Italian, Korean, Portuguese, Spanish, Turkish, Polish, Czech
Cable Length	IMS: 4-core aviation plug, 300 mm IS: RJ45, 360mm
Approval	
EMC	47 CFR Part 15, Subpart B; EN 55032: 2015, EN 61000-3-2: 2014, EN 61000-3-3: 2013, EN 50130-4: 2011 +A1: 2014; AS/NZS CISPR 32: 2015; ICES-003: Issue 6, 2016; KN 32: 2015, KN 35: 2015
Safety	IEC 60950-1:2005 + Am 1:2009 + Am 2:2013, EN 60950-1:2005 + Am 1:2009 + Am 2:2013, IS 13252(Part 1):2010+A1:2013+A2:2015

Environment	2011/65/EU, 2012/19/EU, Regulation (EC) No 1907/2006
Electrical Safety Protection	Ingress protection: IK08 (IEC 62262:2002), IP66 (IEC 60529-2013)
Automotive and Railway	EN 50155-2017; E-MARK, R118, EN45545, 50121-3-2

Installation Recommendation

The following table shows the relations among focal length, mounting height, and max. detection span. For detailed installation advice, please contact the technical support of HIKVISION.



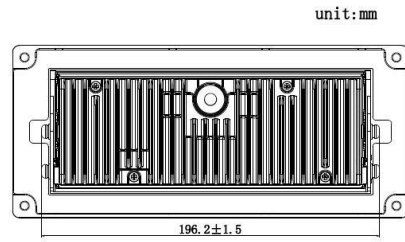
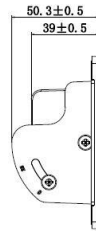
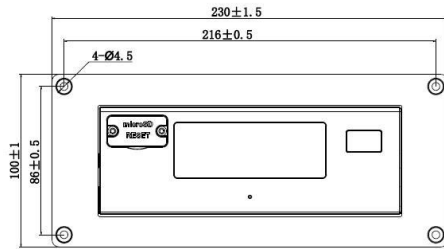
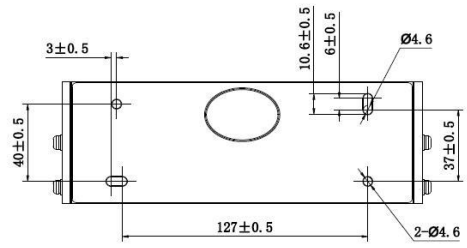
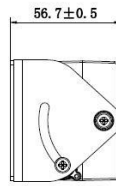
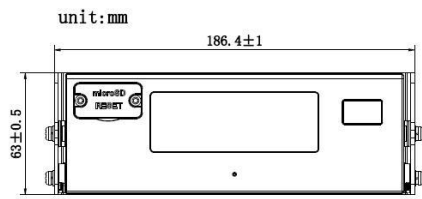
Focal Length (mm)	Mounting Height (m)	Max. Detection Span (m)
2.0	1.9	1.25
2.0	2.0	1.53
2.0	2.1	1.81
2.0	2.2	2.08
2.0	2.3	2.36
2.0	2.4	2.64

▪ Available Models

DS-2XM6825G1/C-IMS(2mm)

DS-2XM6825G1/C-IS(2mm)

▪ Dimension



Headquarters

No.555 Qianmo Road, Binjiang District,
Hangzhou 310051, China
T +86-571-8807-5998
www.hikvision.com



Follow us on social media to get the latest product and solution information.

